



## **MANKIND: THE STORY OF ALL OF US**

### **EPISODE 11: SPEED**

**THIS WORKSHEET SET INCLUDES, IN ORDER, A 68-QUESTION FILL-IN-THE-BLANK, TRUE OR FALSE, AND SHORT ANSWER WORKSHEET. THE SET ALSO INCLUDES, IN ORDER, AN ANSWER KEY.**

EPISODE SUMMARY FROM THE HISTORY CHANNEL: Mankind mobilizes toward modernity. In places like Japan, ancient traditions merge with newfound technologies. Some nations emerge as superpowers, amassing military might. From steamships such as the Titanic to skyscrapers like the Empire State Building, humans create infrastructure and vast communications networks. But progress has its dark side. The demand for rubber devastates Africa; warfare and poverty continue to threaten human survival and longevity.

**Keys Include: Steel, Migration, Rubber, Skyscrapers**

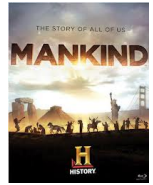
**Terms to define: apocalyptic, colonial, liberating, mass production, reformer, rivets, tenement, micro-organisms**



Name \_\_\_\_\_ Date \_\_\_\_\_ # \_\_\_\_\_

**Mankind: The Story of All of Us**  
**Episode 11: Speed**

from *The History Channel Series Mankind: The Story of All of Us*



**History Channel episode description:** Mankind mobilizes toward modernity. In places like Japan, ancient traditions merge with newfound technologies. Some nations emerge as superpowers, amassing military might. From steamships such as the Titanic to skyscrapers like the Empire State Building, humans create infrastructure and vast communications networks. But progress has its dark side. The demand for rubber devastates Africa; warfare and poverty continue to threaten human survival and longevity.

**MASS PRODUCTION**

**0:00**

1. Where was the Confederate Capital? \_\_\_\_\_
2. True or False. The Confederates plan to defend their capital till the last man standing.
3. The American Civil War, the bloodiest \_\_\_\_\_ in U.S. history.  
 \_\_\_\_\_ Americans dead. More than World Wars I and II  
 \_\_\_\_\_.
4. In modern ages what is they key to the success of mankind? \_\_\_\_\_
5. Four out of \_\_\_\_\_ factories are in the North, making  
 \_\_\_\_\_ times more weapons, \_\_\_\_\_ times more  
 ammunition.
6. Many Southerners still live a life based on what? \_\_\_\_\_
7. Herring and Kent are meant to \_\_\_\_\_ the South's most valued  
 commodity: \_\_\_\_\_, and to destroy food and supplies, anything that  
 could be of use to \_\_\_\_\_ troops.
8. True or False. The Richmond fire only burned the warehouses and the city was left in  
 tact waiting for the Confederates to return.
9. What happens six days after the burning of Richmond? \_\_\_\_\_
10. What new cause do men now fight for? \_\_\_\_\_
11. How many U.S. patents were issued in 40 years? \_\_\_\_\_
12. New inventions \_\_\_\_\_ produced. Identical \_\_\_\_\_  
 made separately, put together on the assembly \_\_\_\_\_. High volume,  
 low \_\_\_\_\_. Around the world a chain reaction. Industry expands  
 \_\_\_\_\_.
13. What country had a medieval way of life isolated from western progress? \_\_\_\_\_
14. The Samurai live and die by what? \_\_\_\_\_
15. Samurai sword- Made from hammered \_\_\_\_\_.  
 \_\_\_\_\_ layers, each 100,000 of an \_\_\_\_\_ thick.  
 Sharp enough to slice through \_\_\_\_\_ human bodies at a time.
16. What dies Iwasaki do? \_\_\_\_\_  
 \_\_\_\_\_

17. Iwasaki enters the barbershop a Samurai, but leaves a what? \_\_\_\_\_
18. What company does Iwasaki create? \_\_\_\_\_
19. What does this company build ships out of? \_\_\_\_\_
20. In just over a \_\_\_\_\_, Mitsubishi becomes the world's largest corporation building \_\_\_\_\_, planes, and \_\_\_\_\_.
21. Japan learns in a \_\_\_\_\_ what the west developed in a \_\_\_\_\_ . Today, it's the planet's \_\_\_\_\_ richest nation.

## SINKABLE TITANIC

14:34

22. What do the Irish workers build out of steel? \_\_\_\_\_
23. True or False. The Titanic is advertised as being unsinkable.
24. April 14, \_\_\_\_\_. R.M.S. Titanic bound for \_\_\_\_\_. Mankind puts its faith in \_\_\_\_\_. On board, a Morse Code message system, the \_\_\_\_\_ telegraph.
25. True or False. At 9:40 p.m. the Titanic received a warning about heavy ice and icebergs from another ship eight miles ahead.
26. How many passengers are on the Titanic? \_\_\_\_\_
27. True or False. A ticket for passage on the Titanic was inexpensive.
28. Steamships power the greatest \_\_\_\_\_ in human history. Over half a century, \_\_\_\_\_ in \_\_\_\_\_ people on the planet emigrate. The most popular destination, across the Atlantic: \_\_\_\_\_.
29. How many people migrate to the U.S.A.? \_\_\_\_\_
30. Why doesn't Jack Phillips hear about the iceberg warning? \_\_\_\_\_  
\_\_\_\_\_  
\_\_\_\_\_
31. Why was the Titanic not able to avoid the iceberg?  
\_\_\_\_\_  
\_\_\_\_\_  
\_\_\_\_\_
32. Which cabins flood first? \_\_\_\_\_
33. What is the new international distress signal? \_\_\_\_\_
34. Why doesn't the Californian come to the Titanic's rescue?  
\_\_\_\_\_  
\_\_\_\_\_  
\_\_\_\_\_
35. How much water pours into the Titanic? \_\_\_\_\_
36. Why can't the third class passengers get up to the deck? \_\_\_\_\_
37. April \_\_\_\_\_, 1912, \_\_\_\_\_ A.M. Two and three quarter hours after hitting an \_\_\_\_\_, Titanic, the unsinkable ship, \_\_\_\_\_.
38. How cold is the water? \_\_\_\_\_
39. How long would it take to die of hypothermia in the water? \_\_\_\_\_
40. How many passengers and crew never reach New York? \_\_\_\_\_

## RUBBER REVOLUTION

25:26

41. What does inventor Charles Goodyear want to figure out how to make more useful and resilient? \_\_\_\_\_
42. What does Goodyear add that provides a breakthrough? \_\_\_\_\_
43. The result, a material \_\_\_\_\_ like leather but \_\_\_\_\_. He calls the process vulcanization after the Roman God of \_\_\_\_\_.
44. True or False. Almost every machine in the Industrial Revolution relies on rubber fittings and seals.
45. The Congo. \_\_\_\_\_ square miles. Over \_\_\_\_\_ rubber plants. Under \_\_\_\_\_ colonial rule. The \_\_\_\_\_ of darkness.
46. What does the Congolese man bring to Alice Harris? \_\_\_\_\_
47. For \_\_\_\_\_ years, Belgium's King Leopold has run the \_\_\_\_\_ as his own private estate. Millions forced to tap \_\_\_\_\_. The \_\_\_\_\_ line his pockets.
48. What happens when workers don't make their quota? \_\_\_\_\_
49. How many Congolese die during 15 years of Leopold's ruler? \_\_\_\_\_

## POWER OF PHOTOGRAPHY

32:45

50. Alice Harris will expose the \_\_\_\_\_ of Leopold's regime and shift \_\_\_\_\_ opinion. A \_\_\_\_\_ that will change mankind.
51. Harris will tell the world what is happening in the \_\_\_\_\_, that children are routinely \_\_\_\_\_ as a warning to villagers. The weapon: a \_\_\_\_\_.
52. How much did the first cameras weigh? \_\_\_\_\_
53. How many amateurs have a camera by 1900? \_\_\_\_\_
54. Harris takes hundreds of \_\_\_\_\_ in the Congo. They are published in \_\_\_\_\_ across the world, shocking \_\_\_\_\_ of readers.
55. True or False. Mark Twain joins the Congo Reform Association to campaign against the atrocities.
56. The campaign forces King Leopold to \_\_\_\_\_ the Congo and the rubber trade. \_\_\_\_\_, a new power in a modern world. \_\_\_\_\_ to illuminating the planet's darkest corners.

## WAR ON BACTERIA

37:10

57. In Europe, the great powers are at \_\_\_\_\_. Mass production means new \_\_\_\_\_ more lethal than ever.
58. List three of the new weapons used during WWI. \_\_\_\_\_, \_\_\_\_\_, \_\_\_\_\_
59. How many people die in WWI? \_\_\_\_\_
60. What do 1/3 of the people during WWI die from? \_\_\_\_\_
61. What is the life expectancy on the front line during WWI in France? \_\_\_\_\_
62. True or False. Alexander Fleming was a bacteriologist on a quest to discover how to successfully treat wounds infected by bacteria.
63. What do some species of bacteria release that cripple the immune system and spread disease? \_\_\_\_\_
64. True or False. Bacteria have killed more people than all the wars in history combined.
65. By WWI, doctors realize there is a link between \_\_\_\_\_ and disease, but can't stop \_\_\_\_\_ from spreading. They tried and tested cure, cut away \_\_\_\_\_, douse it in antiseptic, carbolic \_\_\_\_\_. A deadly trade off. The acid disinfects wounds but also \_\_\_\_\_ white blood cells. The body's natural \_\_\_\_\_ against bacteria.
66. What does Fleming discover while working in a hospital in London in 1928?  
\_\_\_\_\_
67. Within 15 years, penicillin saves \_\_\_\_\_ lives a year. A miracle drug. The world's first \_\_\_\_\_. Today we make \_\_\_\_\_ tons of it every year.
68. Medicine for \_\_\_\_\_ in a world shaped by mass \_\_\_\_\_.